



Streetsville Blooms



Streetsville Horticultural Society

Proud to be a member of the Ontario Horticultural Association

Volume 32, Issue 1

www.streetsvillehort.ca

September 2024



Next Meeting

Tuesday, September 10, 2024

Streetsville United Church

In Heritage Hall

274 Queen Street South

Set Up at 6:30 p.m. for Flower Show

Entries

Doors open at 7:00 p.m.

Meeting starts at 7:30 p.m.

Speaker: Maria Kasstan

Seed Saving

1

Table of Contents

Co-Presidents' Message	2	Coffee Club	8
Leslie Log House	3	Membership Desk	8
Celebrations	3	June Flower Show	9
Rotary Park	4	September Flower Show Schedule	10
Jon Clipperton Park	5	2023 - 2024 Photo Contest	11
Refreshment Table	5	September Speaker Seed Saving	11
Native Plants White Baneberry	6	10 Common Weeds in Ontario	12
Save Your Leaves	7	Item for Sale	13
Mississauga Community	7	Garden News & Happenings	14

¹ *Intermediate Bearded Iris 'Double Your Fun', courtesy of Amarin Tsujimura's garden.*

Co-Presidents' Message

Welcome back everyone! It's hard to believe that summer is drawing to a close. Hopefully your gardens have thrived with the record-breaking rain we experienced in July. September is a good time to reflect on your gardening successes, lessons learned, and think about your visions for the next planting season. Whether it is dividing or moving perennials, pruning shrubs or bushes, or amending your soil, gardening keeps us busy.

Fall is a busy time for the Streetsville Horticultural Society (SHS) as well! Besides renewing your annual membership, there will be two flower shows, and photo contest submissions are due at the September meeting.

SHS is a volunteer organization that relies on its membership to operate. Please think about volunteering to help the Board with running our Society. We are looking to fill the roles of Treasurer, Raffle Table Chair, and Publicity for the upcoming year, in addition to adding a Vice President to the Board of Directors.

On the updated membership renewal form you will see a section that requests your assistance with certain activities, as well as a section that indicates the skills you may possess that the organization may benefit from. Please fill in the form and submit it with your renewal fees at the meeting or by mailing it. The fee for an individual membership is \$20 and a family membership is \$30. While cash is the preferred method of payment, cheque and e-transfer to streetsvilleblooms@gmail.com are also available.

Sue Harshman and her team of helpers will once again be running flower shows in September and October. Refer to the September Flower Show Schedule and information on page 10 for more information. You must have paid your membership fees to participate.

Photo contest entries for the 2023-24 photo contest must be printed, labelled, and brought to the September meeting. Put your photos in an envelope and give them to Christina Anonychuk, our photo contest chairperson.

Please ensure that you have sent your volunteer hours from September 2023 to August 2024 to Grace Nelham.

We are looking forward to seeing everyone at the meeting and hearing about your gardening adventures.

Shelley Dodd & Maureen Dodd
Co-Presidents

Gnome, courtesy of Amarin Tsujimura's garden



Leslie Log House

This summer has just flown by and the gardens at the Log House are packed with many different plants blooming their heads off! All the rain we have had has certainly helped and I believe we only have had to take the hoses out of the shed twice this summer! Bonus.... they're heavy to drag around. Of course, all the weeds are thriving on the good weather as well.

One very hot Wednesday morning, while pruning the peonies back, I got quite a start when Gary the Garter Snake peaked out from the foliage. I guess he was in their trying to stay cool but I honestly can say I have never seen a garter snake climb up into a plant! I let out my usual "EEEEK" and jumped back, heart racing but he seemed like a nice little fellow and didn't want to be bothered with us at all and hung around for a photo op!!!



We have had our usual core group of volunteers out this summer and thus far have only missed one Wednesday due to rain. Many thanks go out to Grace Nelham, Judi Kokis, Nury Garzon, Steve Fenech, Marg Rowan and a couple of others (Monica Ross, Shirley Boyes and Janice Ward) who dropped in once or twice over the summer. If you ever have a Wednesday morning that you feel like weeding, deadheading and having a coffee and camaraderie (yes, we do take a coffee break so we can solve all the world's problems!) head on down to the Log House and join in!

Carol Ashford, LLH Chair

Celebrations- Summer & September



Morning Glory & Aster are the September birth flowers. Members Henry, Mary B. and Maureen D. are celebrating a birthday this month. Over the summer, Mary-Ann, Anne H., and Suzanne T. had birthdays! Wishing you a year ahead filled with garden surprises and delights.



Rena & Sue P. along with their significant others are celebrating their 25th Anniversary in September. The Iris is the traditional flower associated with this silver anniversary and symbolizes strong relationships and admiration. Anna-Marie & John also have an anniversary this month. Happy Anniversary!

*Snake picture taken by Carol Ashford
Aster courtesy of Shelley Dodd's garden
Morning Glory courtesy of Amarin Tsujimura's garden*

Rotary Park

We've had a good summer so far, with lots of helpers and enough rain to be able to avoid watering. We haven't made any major changes or purchases, but lots of little things especially moving plants around to where we hope they'll do better.



We had our first ever garden tour at the end of July, with our helpers visiting the gardens of Asoke Bera and Steve Fenech. They were both very interesting and we hope to visit 2 more gardens at the end of August. It made a nice change from weeding at Rotary Park! Some pictures of the garden tour are attached.

Jon Eldridge, Rotary Park Chair



*Two smaller pictures taken by Steve Fenech
Garden Tour pictures taken by Grace Nelham*

Jon Clipperton Park



We received a request from the City of Mississauga to clean up a flower bed at Jon Clipperton Park, on Church St., south of Water Street, Streetsville. I was a bit reluctant to start with, but went to see the park and found it was quite a small bed and totally choked with weeds. It's not a very busy time at Rotary Park at present and we had a good turnout, so 5 of us went and pulled out 3 bags full of weeds and, as you



can see, what a difference we made. So now we are the official carer for this garden and the City will put up a notice (sign) to that effect. Thanks to all who worked on getting the garden under control.

The Clipperton family have a long connection to our Society, so this was another reason why it made sense for us to take it on.

Jon Eldridge, Rotary Park Chair



Refreshment Table

Thank you to: Rosemarie Bera, Mary Ann Brown, Cathy Clipperton, Sue Harshman, Anita King, Judi Kokis and Martha Witney for your contribution(s) to the June refreshment table. For the September 10th/24 meeting Mary Bernier and Monika Schouten have signed up to contribute. Some of our members are nut and/or gluten free, so some snacks for them would be appreciated as well. Please remember to bring your own coffee/tea mug to the meeting.



Martha J. Witney, Refreshment Co-Ordinator

Pictures taken by Jon Eldridge

streetsvillehort@gmail.com

Native Plants

White Baneberry *Actaea Pachypoda*

This plant is sometimes called Doll's Eyes because the berries look like the China eyes once used in dolls (so they tell me). The name bane means causing great distress, so the berries are obviously poisonous as are all parts of the plant, so keep toddlers away from the attractive looking berries. The birds like them however and possibly some other animals. The shrub grows to about 3ft high and 4ft wide and at Riverwood it is at the edges of deciduous woods in partial shade. I have it in dappled shade as almost any sun turns the leaves brown in August. The leaves are attractive with 2 shades of green, the flowers are white and bloom in May and the white berries are on stems that are supposed to turn a darker shade of red through August. Mine only go to a darker shade of pink. The shrub is not woody and dies back completely in the winter, so we must remember where it is in the early Spring. There is also a red baneberry which is similar in many ways but doesn't seem as hardy (mine never came back in Spring) and of course has red berries, not doll's eyes.



Jon Eldridge



White Baneberry, courtesy of Jon Eldridge's garden

streetvillehort@gmail.com

Save Your Leaves!!

A couple of years ago, as I was raking leaves, I was thinking about an article I saw about leaf mold which is composting leaves only. Conventional composting uses bacteria to break down leaves but leaf mold relies on fungi to work and doesn't need to be stirred or turned. The article said to put leaves in a chicken wire enclosure and leave it for 1-3 years.



I had two empty Big Yellow bags that were used for soil delivery that someone had given to me. After raking up piles of leaves, running the lawnmower over them to make the pieces very small, I put them in the bags, if they were dry I sprayed them with water, tied the bags at the top and put in an out of the way place of my yard. It took a few weeks until I collected all the leaves in my yard. I also took my neighbour's yard bags of leaves that were put on the curb. I left the bags closed for about 9 months.

Eventually, the bags were reduced in size by half and the result was amazing! It looked like fresh soil full of earthworms. Some people couldn't believe it started with only leaves. I spread the mulch all over my flower garden and in my flower pots. It has helped in reducing weeds and retaining moisture. I hope to make more this year!



Steve Fenech

Mississauga Community

Streetsville Horticulture Society once again participated in the City of Mississauga Garden Day on June 22nd! Maureen & Shelley answered questions and distributed SHS publicity material at the event. Members Marcia and Anna-Marie toured Hancock Woodlands Park to learn about the beautiful flowers, shrubs, and trees that grow on the property. Did you know that the park contains rhododendrons and azaleas and was formerly the site of a nursery? The Hancock family who was the original owners were considered pioneers of the Canada's horticultural industry.



Coffee Club

Our two coffee clubs held at the Leslie Log House property were well attended and members enjoyed sharing stories and reconnecting with friends!



Facebook

Don't forget to visit our Facebook page and website.

<https://www.facebook.com/Streetsville-Horticultural-Society-101876555345008>

<http://www.streetsvillehort.ca/>

Membership Renewal

It's that time of the year to renew your S.H.S. membership, which runs from September 2024 until June 2025. The great news is that our fees are staying the same this year, \$30 for a family and \$20 for a single membership.

Attached you will find the revamped 2024/25 membership form. Once completed and signed you can either mail the form and cheque, bring it to the next meeting with your money, or you can renew your membership by using e-transfer streetsvilleblooms@gmail.com.

Guest speakers, special events, meetings, and premium plants are just a few of the things that your membership fees are used for.

We are always looking to grow our membership and a great way to do that is to talk about the Streetsville Horticultural Society with your neighbours and friends.



Dahlia courtesy of Amarin Tsujimura's garden

streetsvillehort@gmail.com

June Flower Show

The June Flower Show was very well attended with a total of 19 participants accumulating 168 points overall. Heinke Thiessen, judged our entries with the help of a student she was teaching. Several of the categories had to be divided due to so many entries. Heinke explained the reasoning behind her allotment of ribbons as she went along and spoke to the members at the end of the meeting.

Awards were distributed as follows...

Horticulture Division

Judges Choice.....Sue Harshman for her "Peony"

Best In Show.....Anita King for her "Iris"

Design Division

Judges ChoiceUrsula Evanoff for her "Canada Day" bouquet

Best in ShowUrsula Evanoff for her "Celebrating Summer" entry

Anita King.....67	Judi Kokis.....12
Ursula Evanoff.....54	Andrea Vertolli.....11
Sue Harshman.....49	Carol Zarb.....9
Steve Fenech.....39	Janice Ward.....7
Martha Witney.....24	Shirley Boyd.....5
Monica Schouten.....22	Bob Bowman.....4
Anna-Marie Raftery.....17	Nury Garzon.....4
Marcia Spear.....16	Don Helsdon.....3
Rob Harshman.....14	Sue Palummieri.....2 (her 1 st flower show entry)
Lorena D'Arsie.....13	



Flower Show Schedule - September 10, 2024

Entries will be received between 6:30 and 7:15. No entries will be accepted after 7:15 p.m. Entry forms are available from our website, www.streetsvillehort.ca. Please print and complete your entry forms at home for faster registration. Entry forms will be available at the show if needed.

DIVISION 1 – HORTICULTURE

(1 entry permitted per exhibitor per class unless otherwise stated)

Section A – Hardy Flowering Perennial or Biennial

- | | |
|---|---------------------------------------|
| 1. Coreopsis (tickseed) | 3 blooms or sprays, same cultivar |
| 2. Echinacea purpurea (purple coneflower) | 1 stem |
| 3. Gaillardia (blanket flower) | 3 blooms, same cultivar |
| 4. Rudbeckia, any species | 1 spray |
| 5. Any other flowering perennial or biennial | 1 stem |
| 6. Rosa (rose) – floating in a clear bowl, in clear water | 1 bloom (at least ¾ open, no foliage) |

Section B – Annual

- | | |
|--|----------------------------------|
| 7. Coleus | 3 stems, same cultivar |
| 8. Cosmos | 3 blooms, same cultivar |
| 9. Pelargonium (geranium) | 1 stem with foliage attached |
| 10. Helianthus (sunflower) | 1 bloom |
| 11. Tagetes (marigold) | 3 blooms, same cultivar |
| 12. Zinnia | 2 blooms, same cultivar |
| 13. Any other flowering annual | 3 stems or sprays, same cultivar |
| 14. Any other annual grown primarily for foliage | 1 stem |

Section C – Flowering Bulb, Corm, Tuber or Rhizome

- | | |
|--|-----------------|
| 15. Dahlia – bloom 4” in diameter or less | 1 bloom |
| 16. Dahlia – bloom over 4” in diameter | 1 bloom |
| 17. Any other flowering bulb, corm, tuber or rhizome | 1 stem or stalk |

Section D – Herbs, Fruit & Vegetables (to be exhibited on a plate unless otherwise specified)

- | | |
|----------------------------------|---|
| 18. Collection cut herbs | 3 -5 different kinds, named, exhibited
in a container of water |
| 19. Peppers | 1 large (i.e. bell) or 3 small (i.e. chili) |
| 20. Tomatoes – cherry variety | 1 truss |
| 21. Tomatoes | 3 specimens, same cultivar, calyx on |
| 22. Any other fruit or vegetable | 1 large (i.e. turnip) or 3 small (i.e. beans) |

DIVISION II - DESIGN, THEME: FALL BOUNTY

(1 entry permitted per exhibitor per class)

- | | |
|--|--|
| 23. September Morning - a design incorporating leaves (maximum 16 inches / 40 cm in length or width) | |
| 24. Fall Bounty | - a table centerpiece (maximum 12 inches / 30 cm in length or width) |

Photo Contest 2023 – 2024

The photo contest is back again! We always look forward to the stunning snapshots you were able to capture throughout the year. If you have photos that fall within the categories below, please submit them at our meeting on Tuesday, September 10, 2024. The contest rules are listed below.

- Class 1** Fall Harvest
- Class 2** Explosion of Colour
- Class 3** Cloud & Sky (only)
- Class 4** Your Best Photo (not black & white)
- Class 5** Spring Blossoms
- Class 6** Winter Delight

All categories are NATURE RELATED

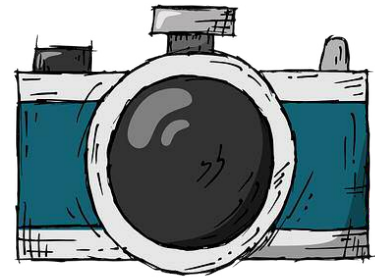


Photo Contest Rules

- Competitor must be a current member in good standing (Sept. 2024 membership paid)
- Photos are to be taken between September 1, 2023, and August 31, 2024
- Photos must be submitted at the September 2024 meeting
- All pictures must be taken by the competitor and must be nature related
- Submit coloured photos, unless otherwise specified, no larger than 4" x 6"
- One entry, per class, per single membership
- Two entries per class, one per person, in a family membership
- Family members must be under 18, as of September 2024 meeting, and be listed on the membership form
- A photo will be withdrawn from the competition, at the discretion of the Photography Contest Chair, if it does not adhere to the written rules
- Previously submitted photos not allowed
- Write the class number (See Above) on the back of each photo
- Place photos in an envelope with your name written on the front of it and bring it to the September 2024 meeting

If you have any questions, please contact Christina Anonychuk.

September Speaker - Maria Kasstan Seed Saving

As a child, I found wild plants going to seed by the railroad tracks and spread their seeds in well kept yards, much to the consternation of the tidy "lawn and boarder" gardeners. The processes of plant life have always seemed more interesting to me than the superficial appearances. About thirty years ago, I started working an allotment garden, and eventually my husband and I became avid urban farmers, raising a lot of our food organically. We expanded our growing projects onto our rooftop and as we learned about heirloom plants, it was natural to carry the seed saving impulse into the vegetable domain. As I became aware of seed saving as a social justice issue and a vital activity for preserving the food supply as well as preserving endangered species and varieties, I decided to make a point of talking to people about it. We all want to protect rare life forms, but we can't all breed pandas and whales in our back yards. But tomatoes? Hey, no problem!

Camera image from Pixabay

10 Common Weeds in Ontario

1. Canada Thistle

Canada Thistle is a seed-bearing perennial plant. These are the types of weeds that spread exponentially in your lawn. The plant has spiky purple blooms that identify it as a weed. The leaves are lobed and shaped like an arrow. The plant appears extremely hairy and has a spiky stalk. They resemble the seed heads of dandelions. These types of weeds can also be found in gardens, roadsides, riverbanks, and forest openings.



2. Dandelions

The deep taproot may reach a length of 15 feet, and the puffball seed head, which scatters seeds with every wind, is the bane of dandelions. These types of weeds commonly appear in the most unexpected places when planting beds and walks, such as hidden in the edge row of pavers or rooted in the middle of a perennial clump.



3. Japanese Knotweed

Large green leaves on thin stalks of Japanese knotweed growing close to gravel. Its attractiveness is actually only bearable during the blooming season; after the growing season ends, it leaves behind a patch of dried canes that blight any landscape, often reaching heights of six feet. Through rhizomes, these types of weeds spread aggressively on your lawn.



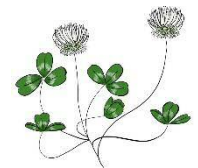
4. Chickweed

Low-growing chickweed is a winter weed that can damage crops early in the growing season if it establishes itself in cool conditions. The Common Chickweed and Sticky Chickweed are the two species of these types of weed. Additionally, these weeds frequently cause issues for turf and landscape grasses. When soil temperatures rise to 40 to 50 degrees Fahrenheit, chickweed begins to germinate. If the soil temperatures rise to 60 degrees Fahrenheit, growth becomes more sluggish. It grows best in conditions with low fertility and damp soils. Chickweed's ability to spread makes it extremely difficult to eradicate.



5. Clovers

The trifoliate leaves of clover plants make them clearly identifiable as perennial types of weeds. They produce white or pink blooms when they flower in late summer and early fall. Clovers expand swiftly and favour places with little vegetation, like farmed fields or deserted farmlands. They grow in soil deficient in nitrogen and creep along the earth. If you find this weed on your lawn, the soil may not have received enough nitrogen.



6. Lamb's Quarter

An annual non-woody plant called lamb's quarters often grows in disturbed places like gardens, mulch piles, and empty lots. A few branches may erupt from the single stem above the base. Leaf stems and stalks might have stripes or a reddish or purplish tint.



7. Nutsedge

These are perennial types of weeds that grow in sun or shaded garden areas.

Nutsedge's appearance consists of little, nut-like tubers on the root system, triangular stems, and thin, grassy leaves. These weeds are easy to identify when they appear in lawns because they frequently grow more quickly than turf grass.

8. Giant Ragweed

These types of weeds have deep roots and branches, and their propensity to grow up to 15 feet tall makes them easy to detect. Similar to its cousin, the big ragweed, but not like goldenrod, it generates copious amounts of pollen, which triggers severe allergies.



9. Ground Ivy

These weeds look a lot like clover. Ground ivy, the ubiquitous lawn weed, has various names. It goes by several names, such as gill, gill-over-the-ground, and creeping Charlie. Ground ivy has lovely blossoms despite being considered a weed, and it smells good when mowed. Additionally, it is utilized as a medicinal herb.



10. Broadleaf Plantain

The broadleaf plantain forms a cluster of leaves with parallel veining. If untrimmed, the leaves of these types of weeds can grow up to six inches long and three to four inches across on long, broad petioles. They are minute, glossy, and dark brown and spaced throughout the length of the flower stalk. The foliage can be wavy, blue-green, and frequently waxy. The taproot is short and fleshy, from which the fibrous roots grow. On long, leafless flower stalks that emerge from the rosette, insignificant blooms are formed.



Information from falconslandscaping.com

Pictures from familyhandyman.com

Item for Sale

The SHS has a Push Mower for sale. Three Push Mowers were donated to the Plant Sale and one did not sell. Anyone who would like to give up their gas or electric mowers, or their lawn is small and would like the control of a manual mower, let Carol Ashford know. The mower is a brand Yard Works and is very reasonably priced at \$50.



new
only

Gardening News & Happenings – September 2024:

(If you have items to add to the list next month, please email maureendodd62@gmail.com)

- **[Blooming Boulevards virtual presentations: Four Season Beauty & Biodiversity](#)** Saturday September 07 | 10:00 - 11:00 am. [It's Easy! Seed Saving 101](#) Saturday September 14 | 10:00 – 11:00 am. [Growing Native Plants From Seed](#) Saturday September 21 | 10:00 – 11:00 am. FREE; Registration online up to 48 hours before the start of the session.
- **[Credit Valley Conservation](#)**: Offers a number of interesting events this month. There are multiple tree plantings and native habitat restoration volunteer opportunities. Or attend the FREE [Caring for Your New Tree Workshop](#) on Thursday September 12 | 6:00 – 7:15 pm at the Georgetown Tree Arboretum. Or join in online for the FREE [Caring for Your Yard webinar](#) on Wednesday September 25 | 6:30 – 7:30 pm.
- **[Mississauga Seed Library](#)**: Learn the basics of [Saving Seeds](#) at this FREE drop-in program (first 60 participants) Saturday September 14 | 10:30 – 11:30 am at Port Credit Library.
- **[The Riverwood Conservancy](#)**: Check out the FREE events this month: [Qi Gong](#) Thursday September 05 | 6:00 – 7:00 pm and again on Saturday September 28 | 4:00 – 5:00 pm; [Forest Bathing](#) Monday September 09 | 9:00 – 10:30 am; [Yoga in Nature](#) Saturday September 14 | 10:00 – 11:00 am; [Evening Talk: Ontario's Bats](#) Thursday September 19 | 7:00 – 9:00 pm; [Jingtamok: The Riverwood Indigenous Social](#) Saturday September 21 | 10:00 – 4:00 pm; Check out their website for more [events](#) from \$5 to \$55.
- **[Royal Botanical Gardens](#)**: always has lots to see! Check out the [Hamilton and District Chrysanthemum and Dahlia Society Flower Show](#) on Saturday September 07 | 1:00 – 5:00 pm and on Sunday September 08 | 10:00 am – 3:00 pm. Included with general admission to RBG. Adults \$19.50; Seniors \$16.50. [Purchase admission online](#).
- **[University of Guelph Arboretum](#)**: Take a road trip to Guelph to celebrate all things trees! Featuring tours of the grounds and gardens, workshops, activities, a woody plant sale and lots more! For details see the [Arboretum Expo schedule](#). Saturday September 07 | 10:00 am – 3:00 pm. Read their [September newsletter](#) to find out what is in bloom in the arboretum now!

Also:

[Garden Ontario Fall 50/50 Draw](#) Garden Ontario is holding a fundraising 50/50 raffle with 50% of the proceeds supporting the Keep Ontario Beautiful program. Tickets prices start at 10 for \$10. Draw #10 takes place on Saturday September 28th. Tickets are available at [OHA 50/50 draw](#).



Streetsville Horticultural Society (SHS) Membership Form (2024-25)



Date: _____ Name(s): _____

Returning members: If there are **no changes** to your contact information check here

Address: _____ City: _____

Postal Code: _____ Phone: _____ (Alternative) _____

Email Address: _____

Annual Membership Dues Fees are payable by cash, cheque, or e-transfer streetsvilleblooms@gmail.com

- Single** - \$20
- Family** - \$30 (Two adults & children under 18 at same address)

Write family member names here for insurance coverage _____

Newsletter mailing fee \$10 **** (Available only if email not possible) ****

Paid by: Cash Cheque E-transfer Received by: _____

Volunteering is a great way to make friends! We rely on members to help with many tasks. Please check off any activities you are interested in helping with.

<input type="checkbox"/> Serve refreshments at meetings	<input type="checkbox"/> Organize garden tours	<input type="checkbox"/> Maintain the website
<input type="checkbox"/> Help at Flower Show	<input type="checkbox"/> Organize field trips	<input type="checkbox"/> Post on Social Media
<input type="checkbox"/> Maintain Gardens Leslie Log House or Rotary Park	<input type="checkbox"/> Photograph SHS events	<input type="checkbox"/> Welcome new members
<input type="checkbox"/> Publicize Society	<input type="checkbox"/> Become a board member	<input type="checkbox"/> Maintain financials
<input type="checkbox"/> Assist with Plant Sale	<input type="checkbox"/> Run the draw table	<input type="checkbox"/> Write newsletter items
<input type="checkbox"/> Set up for meetings	<input type="checkbox"/> Bake /Cook for meeting	<input type="checkbox"/> Solicit Donations

Optional Birthday/Anniversary Acknowledgement We would like to celebrate our members milestone birthdays & anniversaries. If you are interested, please provide your birthday or anniversary date which will appear in our newsletter and on our Facebook page.

Birthday: _____ Wedding anniversary date: _____
YYYY-MM-DD YYYY-MM-DD

SEE OVER

Member Skills We are a diverse group who possess a vast array of skills. Please check off the skills you possess from the list below.

- Advertising and Marketing
- Audio/visual skills
- Computer/Laptop skills
- Event management
- Excel, Word, PowerPoint, Quickbooks
- Floral Design
- Finance/Accounting
- Garden Design/Landscaping
- Graphics Design -Google Docs, Canva
- Horticultural expertise: Topic _____
- Social Media- Instagram, Facebook, Tiktok
- Other_____

Photo Release & Electronic Communications Consent

I give Streetsville Horticultural Society and/or the Ontario Horticultural Association permission to use images that include me in print and electronic publications, such as the newsletter, websites, and social media. I understand that no compensation shall be payable to me for the image usage.

Yes No

I consent to receive electronic communications from the SHS: Newsletter, special events, and any other information deemed relevant or necessary to communicate with its members.

Yes No

Signature: _____ **Date:** _____

Streetsville Horticultural Society
128 Queen Street South P.O. Box 42048
Streetsville, Ontario
L5M 1K8
www.streetsvillehort.ca